

# COST & TIME SAVING IFEC SOLUTIONS

## IFEC Computer

### Compact Design with Removable Storage

DDC's IFEC computers with high-capacity removable storage can be used in multiple commercial aircraft applications, including: in-flight entertainment, environmental and lighting controls, data recording and data loading.

- **Cost & Time Saving Design**

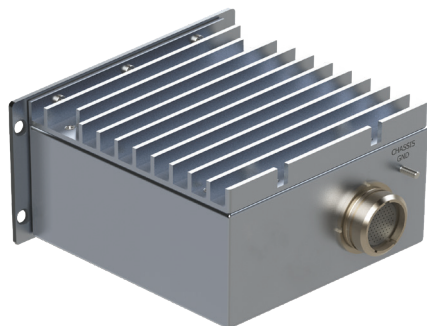
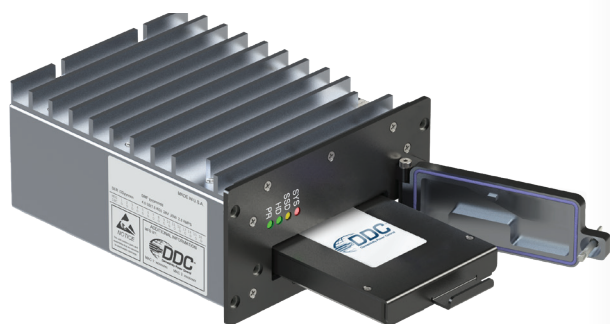
- Line-replaceable and lightweight solution (< 3lbs), ideal for new and retrofit applications
- Field upgradeable software

- **High Reliability & Performance**

- High speed Gigabit Ethernet data transfer with secure file encryption / decryption
- Up to 8TB of rugged Solid-State Drive (SSD) storage
- Built with high reliability (MTBF of 50,000 hours) field proven military avionics technology

- **Certified to Airborne Safety & Reliability Standards**

- DO-160E certified / DO-178E & DO-254D certifiable
- Designed / selected for the latest commercial aircraft



**55**

YEARS OF SERVICE



To learn more, visit: [Twitter](#) [LinkedIn](#)

[www.ddc-web.com/IFEC-Computer/ifm](http://www.ddc-web.com/IFEC-Computer/ifm)

**Aircraft** interiors **EXPO**<sup>®</sup>

MARCH 31 - APRIL 2 2020  
HAMBURG MESSE | GERMANY

See us at  
**Stand# 2E90**

Meet with us at Aircraft Interiors Expo,  
E-mail: [appointment@ddc-web.com](mailto:appointment@ddc-web.com)